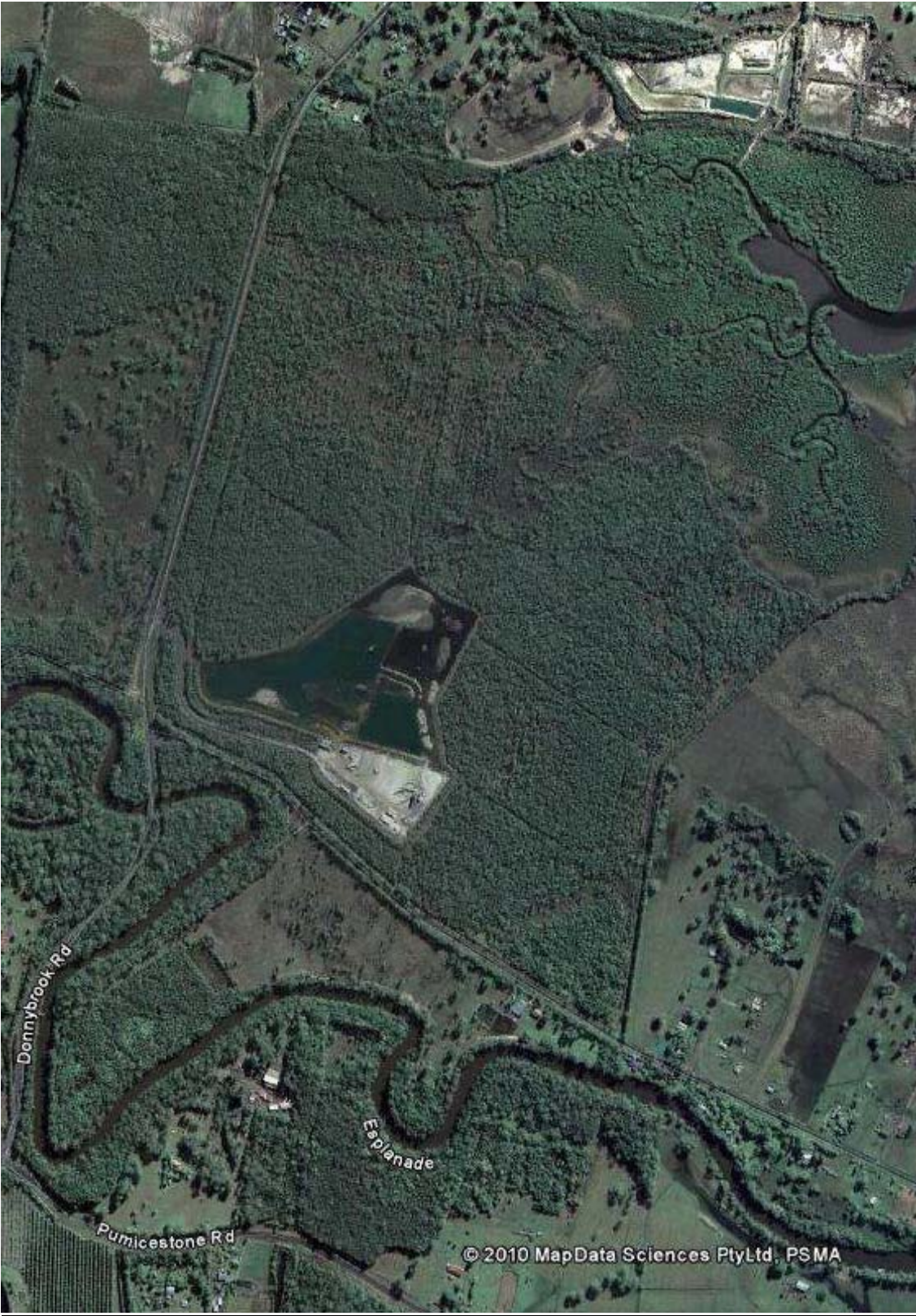


GoogleEarth image of Donnybrook sand mine in operation 17 June 2009



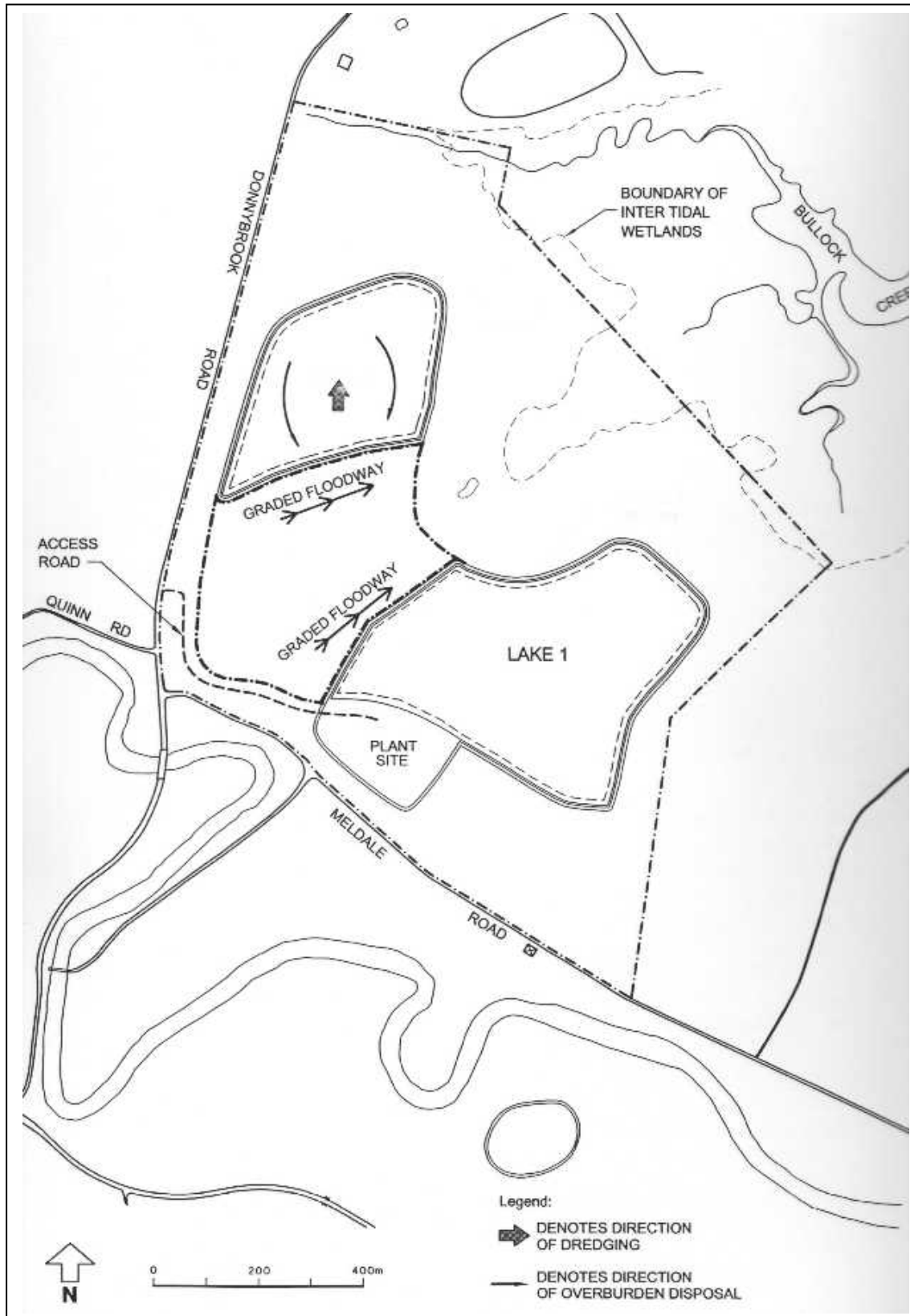
© 2010 MapData Sciences PtyLtd, PSMA

**Pre-development aerial photograph of Donnybrook sand mine and adjacent wetland area (ca 2000)<sup>1</sup>**



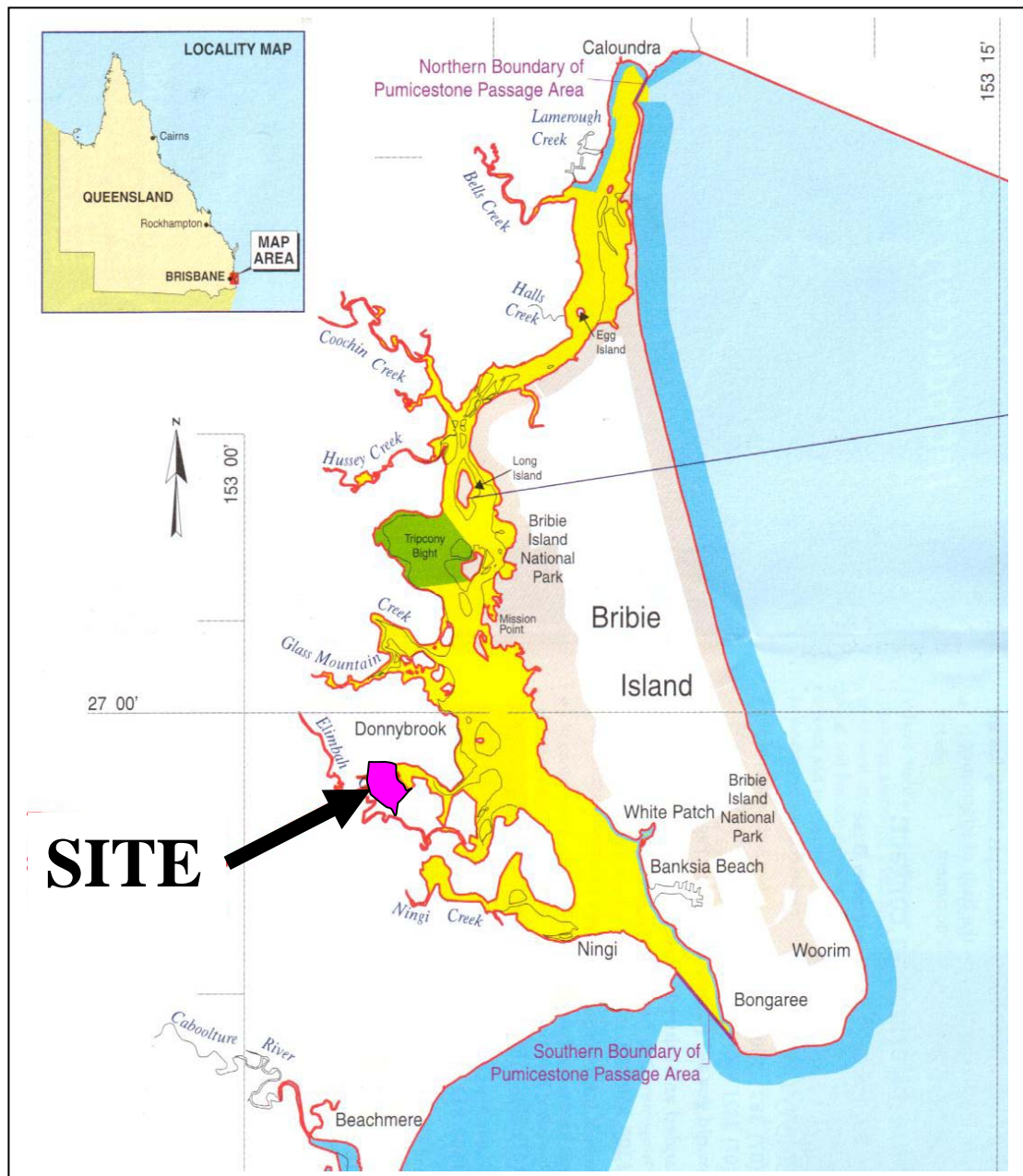
<sup>1</sup> Brown & Root, *Proposed Extractive Industry Operations at Donnybrook – Acid Sulphate Soil Management Plan* (unpublished report, 6 September 2000), Figure 2.5. Note: both creeks shown, Bullock Creek and Elimbah Creek, are part of the Moreton Bay Ramsar Wetland.

**Map of Donnybrook sand mine showing limit of extraction and floodway<sup>2</sup>**



<sup>2</sup> Brown & Root, n 4, Figure 3.6.

**Location map of the Donnybrook sand mine adjacent to the  
Moreton Bay Marine Park and Ramsar Wetland<sup>3</sup>**



<sup>3</sup> Queensland Parks and Wildlife Service, *Moreton Bay Marine Park - Introductory Guide* (QPWS, Brisbane, August 1998). The red line on the map indicates the high water mark, which forms the boundary of the marine park and Ramsar wetland.